

CHARACTERISTICS

Ambient temperature	-5 ÷ 50 °C
Fluid	10 µm filtered air, with or without lubrication
Commutation system	spool
Max pressure	9 bar (electrical control) * 10 bar (pneumatic control)
Connections	G1/8 (P15F) - G1/8 - tube Ø 4-6-8 (P15B)
Nominal flow rate (NI/min)	800 (5/2) 720 (5/3) 720 (3/2+3/2)
Valve body	zamak
Seals	NBR
Spool	aluminium
Electropilot	B10 (0,3W) - B11 (1 W)
Voltage	24 V DC (± 10%)
Power consumption	B10 = 0,3 W, speed -up 1 W (25 ms) B11 = 1 W
Protection degree	IP65
Manual override	recessed button - 1 position

* = At pressure higher than 7bar with B10 pilot (0.3W) it is recommended to use solenoid valves with external pilot supply

CODIFICATION KEY

P	1	5	F	2	4	4	2	4	
	1		2	3	4	5	6		

1 Series	2 Type	3 Control 14	4 Return 12
P15F = Threaded body P15B = Body for sub-base P15D = Threaded body 15 mm connector	2 = 5/2 3 = 5/3 c.c. 4 = 5/3 o.c. 5 = 5/3 p.c.	6 = 3/2+3/2 NC-NC 7 = 3/2+3/2 NC-NO 8 = 3/2+3/2 NO-NO	3 = Pneumatic amplified 4 = Electrical amplified 90° (0,3W) 6 = Electrical amplified 90° (1W)
5 Voltage 24 = 24 V DC	6 Option D = External pilot supply on valve body (P15 = M5)		0 = Pneumomechanical spring 1 = Mechanical spring 3 = Pneumatic amplified 4 = Electrical amplified 90° (0,3W) 6 = Electrical amplified 90° (1W)

c.c. = closed centres o.c. = open centres p.c. = pressurized centres

Pneumatic impulse - Threaded connections G1/8

■ Single impulse

P15F230

P15F231

■ Double impulse

P15F233

P15F333

P15F433

P15F533

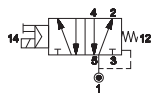
P15F633

P15F733

P15F833

Electrical impulse - Threaded connections G1/8

Single impulse



P15F24024 0,3 W
P15F26024 1 W



P15F24124 0,3 W
P15F26124 1 W

B10



Low power consumption 0,3 W

NEW - B11

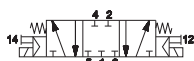


Standard 1 W

Double impulse



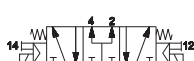
P15F24424 0,3 W
P15F26624 1 W



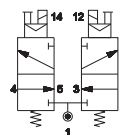
P15F34424 0,3 W
P15F36624 1 W



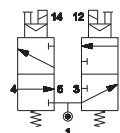
P15F44424 0,3 W
P15F46624 1 W



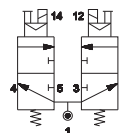
P15F54424 0,3 W
P15F56624 1 W



P15F64424 0,3 W
P15F66624 1 W



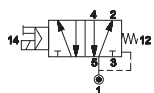
P15F74424 0,3 W
P15F76624 1 W



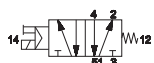
P15F84424 0,3 W
P15F86624 1 W

Electrical impulse - Threaded connections G1/8 - 15 mm connector

Single impulse



P15D24024 0,3 W
P15D26024 1 W

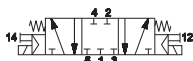


P15D24124 0,3 W
P15D26124 1 W

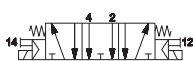
Double impulse



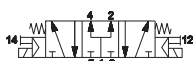
P15D24424 0,3 W
P15D26624 1 W



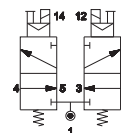
P15D34424 0,3 W
P15D36624 1 W



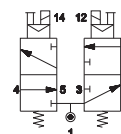
P15D44424 0,3 W
P15D46624 1 W



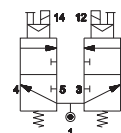
P15D54424 0,3 W
P15D56624 1 W



P15D64424 0,3 W
P15D66624 1 W



P15D74424 0,3 W
P15D76624 1 W



P15D84424 0,3 W
P15D86624 1 W

Integrated electrical connection



TIM1524	TIM151806	TIM1536	P15SF100	P15SF110	P15SF200	P15SF210
---------	-----------	---------	----------	----------	----------	----------

male connection module 25 poles 12+12 coils type sub-D	male connection module 25 poles 18 coils, side 14 6 coils, side 12 type sub-D	male connection module 37 poles 16+16 coils type sub-D	sub-base 1 place	sub-base 1 place 1-3-5 closed	sub-base 2 places	sub-base 2 places 1-3-5 closed

P15SF500	P15SF505	P15SF550	P15SF560	P15SF570	P15SS**..M
----------	----------	----------	----------	----------	------------

left supply plate G1/4 for TIM module	right supply plate G1/4	pressure separator	closing plate for unused valve place	intermediate supply plate for threaded version	male bus connection card, ** = side 14 or 12 .. = 04, 06, 08 places

P15SS**08MF	P15SS**04MFP	P15SS**04MP	P15STR01	P15STR02	P15STR05
-------------	--------------	-------------	----------	----------	----------

male/female bus connection card ** = side 14 or 12 8 places	male/female bus connection card extension ** = side 14 o 12 4 places	bus card extension ** = side 14 o 12 4 places	modular tie-rods 1 valve place	modular tie-rods 2 valve places	modular tie-rods 5 valve places

AZ4-SN004A
No. 100 nuts M4
for tie-rods

AZ4-VN0414
No. 100 screws M4x14
for tie-rods

Electrical connection with external connector



P15SF300	P15SF310	P15SF400	P15SF410	P15SF515	P15SF550	P15SF560
----------	----------	----------	----------	----------	----------	----------

sub-base 1 place	sub-base 1 place 1-3-5 closed	sub-base 2 places	sub-base 2 places 1-3-5 closed	right/left supply plate G1/4	pressure separator	closing plate for unused valve place

P15SF570	P15STR01	P15STR02	P15STR05
----------	----------	----------	----------

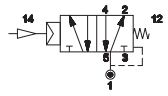
intermediate supply plate for threaded version	modular tie-rods 1 valve place	modular tie-rods 2 valve places	modular tie-rods 5 valve places

AZ4-SN004A
No. 100 nuts M4
for tie-rods

AZ4-VN0414
No. 100 screws M4x14
for tie-rods

Pneumatic impulse - Body for sub-base mounting

Single impulse

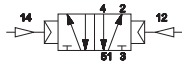


P15B230

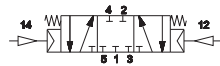


P15B231

Double impulse



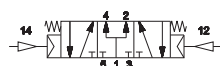
P15B233



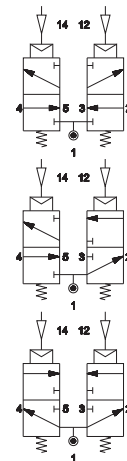
P15B333



P15B433



P15B533



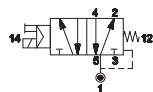
P15B633

P15B733

P15B833

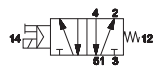
Electrical impulse - Body for sub-base mounting

Single impulse



P15B24024 0,3 W

P15B26024 1 W



P15B24124 0,3 W

P15B26124 1 W

B10

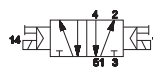
NEW - B11



Low power consumption 0,3 W

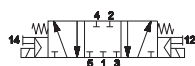
Standard 1 W

Double impulse



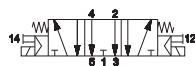
P15B24424 0,3 W

P15B26624 1 W



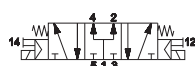
P15B34424 0,3 W

P15B36624 1 W



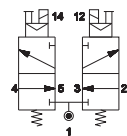
P15B44424 0,3 W

P15B46624 1 W



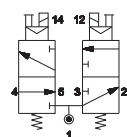
P15B54424 0,3 W

P15B56624 1 W



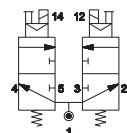
P15B64424 0,3 W

P15B66624 1 W



P15B74424 0,3 W

P15B76624 1 W



P15B84424 0,3 W

P15B86624 1 W

Integrated electrical connection



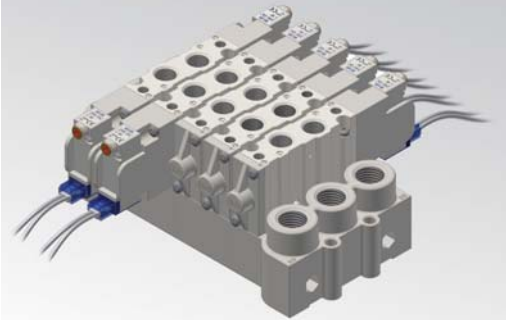
TIM1524	TIM151806	TIM1536	P15SB100	P15SB110	P15SB200	P15SB210
male connection module 25 poles 12+12 coils type sub-D	male connection module 25 poles 18 coils side 14 6 coils side 12 type sub-D	male connection module 37 poles 16+16 coils type sub-D	sub-base 1 place side outlets G1/8	sub-base 1 place side outlets G1/8 1-3-5 closed	sub-base 2 places side outlets G1/8	sub-base 2 places side outlets G1/8 1-3-5 closed
P15SB300	P15SB310	P15SB400	P15SB410	P15SB500	P15SB505	P15SB550
sub-base 1 place side outlets for push-in fittings	sub-base 1 place side outlets for push-in fittings 1-3-5 closed	sub-base 2 places side outlets for push-in fittings	sub-base 2 places side outlets for push-in fittings 1-3-5 closed	supply plate G1/4 for TIM module	right supply plate G1/4	pressure separator
P15SB560	P15SB570	P15SS**..M	P15SS**08MF	P15SS**04MFP	P15SS**04MP	
closing plate for unused valve place	intermediate supply plate for sub-base	male bus connection card ** = side 14 or 12 .. = 04, 06, 08 places	male/female bus connection card ** = side 14 or 12 8 places	male/female bus connection card extension ** = side 14 or 12 4 places	bus card connection extension ** = side 14 or 12 4 places	
P15STR01	P15STR02	P15STR05	GZR-V10004/06/08	AZ4-SN004A No. 100 nuts M4 for tie-rods	AZ4-VN0414 No. 100 screws M4x14 for tie-rods	
modular tie-rods 1 valve place	modular tie-rods 2 valve places	modular tie-rods 5 valve places	straight fitting GZR-V10004 = tube Ø4 mm GZR-V10006 = tube Ø6 mm GZR-V10008 = tube Ø8 mm			

Electrical connections

D-535U40300 D-535U40500	AM-5109	TSCFN24S000 TSCFN36S000	TSCFN24S0300 TSCFN24S0500 TSCFN24S1000 TSCFN32S0300 TSCFN32S0500 TSCFN32S1000	TSCFN16D0300 TSCFN16D0500 TSCFN16D1000
single connector with cable 3-5 m	15 mm connector	female connector 25/37 poles, type sub-D, no cable M3x8 fixing screws	female connector 25/37 poles, type sub-D with cable 3-5-10 m M3x8 fixing screws	sub-D male/female flying connector prewired for 16 coils with cable Ø 8 mm (3-5-10 m length) suitable for dynamic laying M3x8 fixing screws

CHARACTERISTICS

Ambient temperature	-5 ÷ 50 °C
Fluid	10 µm filtered air, with or without lubrication
Commutation system	spool
Max pressure	9 bar (electrical control) * 10 bar (pneumatic control)
Connections	G1/8 (P15F) - G1/8 - tube Ø 4-6-8 (P15B)
Nominal flow rate (NI/min)	800 (5/2) 720 (5/3) 720 (3/2+3/2)
Valve body	zamak
Seals	NBR
Spool	aluminium
Electropilot	B10 (0,3W) - B11 (1 W)
Voltage	24 V DC (± 10%)
Power consumption	B10 = 0,3 W, speed-up 1 W (25 ms) B11 = 1 W
Protection degree	IP65
Manual override	recessed button - 1 position



* = At pressure higher than 7bar with B10 pilot (0.3W) it is recommended to use solenoid valves with external pilot supply

CODIFICATION KEY

P	1	5	F	2	8	0	2	4	
	1	2	3	4	5	6			

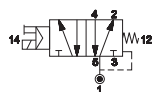
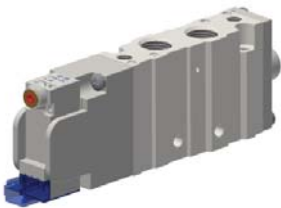
1 Series	2 Type	3 Control 14	4 Return 12
P15F = Threaded body P15B = Body for sub-base mounting	2 = 5/2 3 = 5/3 c.c. 4 = 5/3 o.c. 5 = 5/3 p.c.	6 = 3/2+3/2 NC-NC 7 = 3/2+3/2 NC-NO 8 = 3/2+3/2 NO-NO	8 = Electrical amplified in-line (0,3W) 9 = Electrical amplified in-line (1W)
			0 = Pneumomechanical spring 1 = Mechanical spring 8 = Electrical amplified in-line (0,3W) 9 = Electrical amplified in-line (1W)

5 Voltage	6 Option
24 = 24 V DC	D = External pilot supply on valve body (P15 = M5)

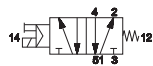
c.c. = closed centres o.c. = open centres p.c. = pressurized centres

Electrical impulse - Threaded connections G1/8

■ Single impulse

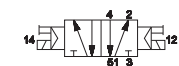
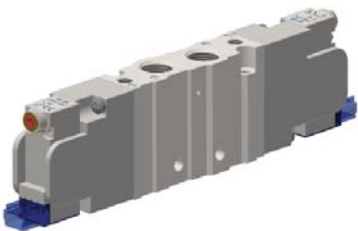


P15F28024 0,3 W
P15F29024 1 W

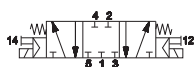


P15F28124 0,3 W
P15F29124 1 W

■ Double impulse



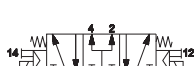
P15F28824 0,3 W
P15F29924 1 W



P15F38824 0,3 W
P15F39924 1 W



P15F48824 0,3 W
P15F49924 1 W



P15F58824 0,3 W
P15F59924 1 W

■ B10

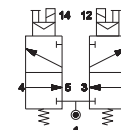


Low power consumption 0,3 W

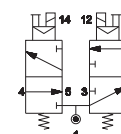
■ NEW - B11



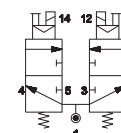
Standard 1 W



P15F68824 0,3 W
P15F69924 1 W



P15F78824 0,3 W
P15F79924 1 W



P15F88824 0,3 W
P15F89924 1 W

Electrical connection with external connector



P15SF300	P15SF310	P15SF400	P15SF410	P15SF515	P15SF550	P15SF560
sub-base 1 place	sub-base 1 place 1-3-5 closed	sub-base 2 places	sub-base 2 places 1-3-5 closed	right/left supply plate G1/4	pressure separator	closing plate for unused valve place
P15SF570	P15STR01	P15STR02	P15STR05			
intermediate supply plate for threaded version	modular tie-rods 1 valve place	modular tie-rods 2 valve places	modular tie-rods 5 valve places	AZ4-SN004A No. 100 nuts M4 for tie-rods AZ4-VN0414 No. 100 screws M4x14 for tie-rods		

Electrical impulse - Body for sub-base mounting

■ Single impulse

	P15B28024 0,3 W		NEW - B11
	P15B29024 1 W		
	P15B28124 0,3 W		
	P15B29124 1 W		

Low power consumption 0,3 W Standard 1 W

■ Double impulse

	P15B28824 0,3 W		P15B68824 0,3 W
	P15B29924 1 W		
	P15B38824 0,3 W		P15B78824 0,3 W
	P15B39924 1 W		
	P15B48824 0,3 W		P15B88824 0,3 W
	P15B49924 1 W		
	P15B58824 0,3 W		
	P15B59924 1 W		

Electrical connection with external connector

3



TIM1524	TIM151806	TIM1536	P15SB100	P15SB110	P15SB200	P15SB210
male connection module 25 poles 12+12 coils type sub-D	male connection module 25 poles 18 coils side 14 6 coils side 12 type sub-D	male connection module 37 poles 16+16 coils type sub-D	sub-base 1 place side outlets G1/8 integrated version	sub-base 1 place side outlets G1/8 1-3-5 closed	sub-base 2 places side outlets G1/8	sub-base 2 places side outlets G1/8 1-3-5 closed
P15SB300	P15SB310	P15SB400	P15SB410	P15SB504	P15SB505	P15SB550
sub-base 1 place side outlets for push-in fittings integrated version	sub-base 1 place side outlets for push-in fittings 1-3-5 closed	sub-base 2 places side outlets for push-in fittings integrated version	sub-base 2 places side outlets for push-in fittings 1-3-5 closed	supply plate G1/8 for TIM module	right supply plate G1/4	pressure separator
P15SB560	P15SB570	P15STR01	P15STR02	P15STR05	GZR-V10004/06/08	
closing plate for unused valve place	intermediate supply plate for sub-base	modular tie-rods 1 valve place	modular tie-rods 2 valve places	modular tie-rods 5 valve places	straight fitting GZR-V10004 = tube Ø4 mm GZR-V10006 = tube Ø6 mm GZR-V10008 = tube Ø8 mm	

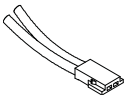
AZ4-SN004A

No. 100 nuts M4 for tie-rods

AZ4-VN0414

No. 100 screws M4x14 for tie-rods

D-530-30/50/200



Miniature connector with loose cables
D-530-30 = cable length 300 mm
D-530-50 = cable length 500 mm
D-530-200 = cable length 2000 mm