

HGU

Quick Couplings for Compressed Air

The fittings belonging to this series enable to disconnect in a quick and easy way the pipeline of the main installation without interrupting the compressed air flow coming from the origin source.

The range of quick couplings is composed of the Universal series - male and female model - and the mini series to be used in case reduced dimensions and flow rate are required. Each model is produced according to the international standards in order to be interchangeable in any moment.



TECHNICAL CHARACTERISTICS

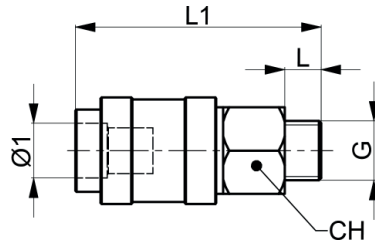
Temperature	-10 ÷ 80 °C
Fluid	compressed air
Working pressure	12 bar

CONSTRUCTIVE CHARACTERISTICS

Body	nickel-plated brass, zinc-plated steel
Ferrule	nickel-plated brass, zinc-plated steel
Seals	NBR
Spring	nickel-plated brass, zinc-plated steel

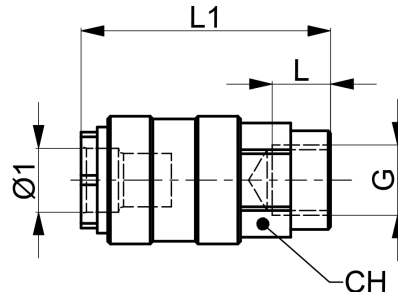
For further technical information contact our Sales Office

HGU2001M Universal male socket



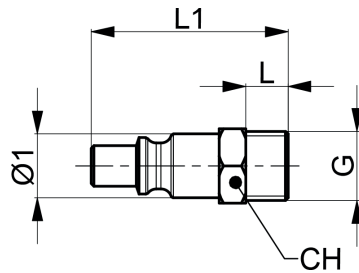
Part No.	G	Ø1	L	L1	CH
HGU2001M14	G 1/4"	12	8	54	19
HGU2001M38	G 3/8"	12	8	54	19
HGU2001M12	G 1/2"	12	12	54	21

HGU2001F Universal female socket



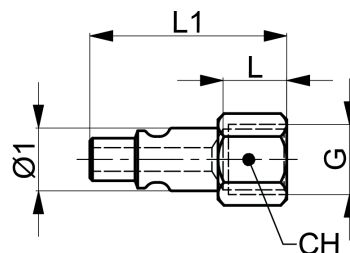
Part No.	G	Ø1	L	L1	CH
HGU2001F14	G 1/4"	12	12	47	19
HGU2001F38	G 3/8"	12	12	49	21
HGU2001F12	G 1/2"	12	15,5	51	24

HGU2002M Universal male plug



Part No.	G	Ø1	L	L1	CH
HGU2002M14	G 1/4"	12	8	8	37
HGU2002M38	G 3/8"	12	9	39	18

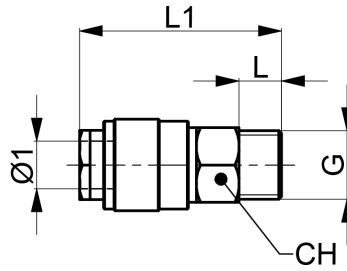
HGU2002F Universal female plug



Part No.	G	Ø1	L	L1	CH
HGU2002F14	G 1/4"	12	12	37	15
HGU2002F38	G 3/8"	12	12	38,5	19

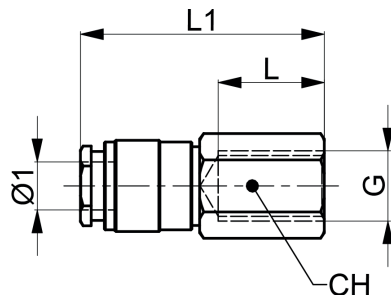
5

HGU1001M Male mini socket



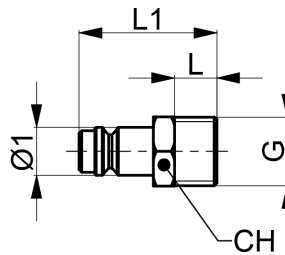
Part No.	G	Ø1	L	L1	CH
HGU1001M18	G 1/8"	9	8	38	14
HGU1001M14	G 1/4"	9	8	38	14

HGU1001F Female mini socket



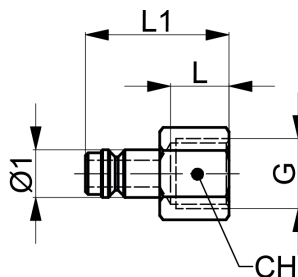
Part No.	G	Ø1	L	L1	CH
HGU1001F18	G 1/8"	9	15	38	15
HGU1001F14	G 1/4"	9	15	46	17

HGU1002M Male mini plug



Part No.	G	Ø1	L	L1	CH
HGU1002M18	G 1/8"	9	8	26	13
HGU1002M14	G 1/4"	9	8	26	13

HGU1002F Female mini plug



Part No.	G	Ø1	L	L1	CH
HGU1002F18	G 1/8"	9	10	24	12
HGU1002F14	G 1/4"	9	11	26	15