

DF-RW

External magnetic-fields immune electronic sensor

Sensors assembled on the cylinders detect the position of the piston by switching an electric signal as the magnetic-field produced, by the magnet in the piston, approaches.

Typically used in applications where strong magnetic fields may influence the sensor conditions.

Particularly suitable in the Automotive applications and in the nearby of welding-machines.

2 colors (red and green) LED indicator for an optimal position detection.



TECNICAL CHARACTERISTICS

Type	ELECTRONIC	
	DF-RW700L03	DF-RW700M12
Part no.	DF-RW700L03	DF-RW700M12
Working voltage (V DC)	10÷28 V DC	10÷28 V DC
Max switching current (mA)	5÷50	5÷50
Max switching power (W)	1,5	1,5
Temperature (°C)	-10 ÷ +60	
Max voltage drop (V AC/DC)	5	5
Cable number and section (mmq)	2x4,8 (PUC)	2x4,8 (PUC)
Cable lenght (mm)	3000	500
Contact	NO	NO
Max response time (ms)	50	50
State indicator (LED)	red (detection position) green (optimal detection position)	
Protection degree (IEC 60529)	IP67	
Shock resistance (G)	50	50

EXTENSION CABLES

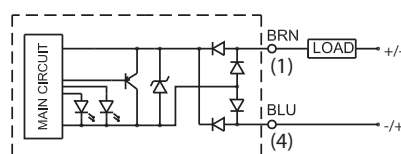
3m ext. cable with M12 3-poles connect. max 60 V	DHF-033M12
5m ext. cable with M12 3-poles connect. max 60 V	DHF-053M12

When using the M12 3-poles extensions cable with DF-RW, DF-RX magnetic sensors, exclude the blue wire before to connect.

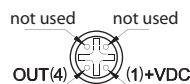
Pay attention to correct polarity connection while using direct current; avoid magnetic fields to influence the electronic sensor; provide the KM-008200 filter in case of use of extension cables longer than 10m; provide dedicated filters in case of use of inductive loads.

Subject to change

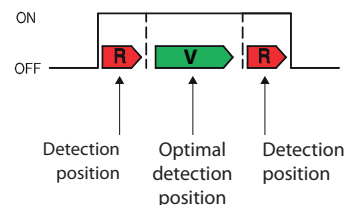
ELECTRICAL CIRCUIT



M12



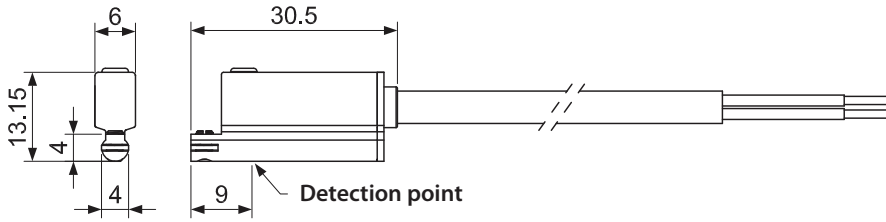
2 colors LED indicator



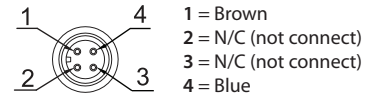
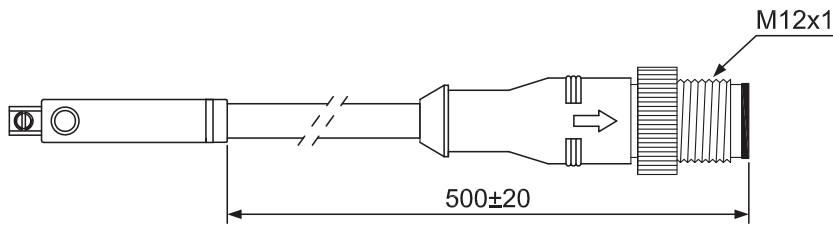
Detection position: red LED on.
Optimal detection position: green LED on.

Dimensions

DF-RW700L03



DF-RW700M12

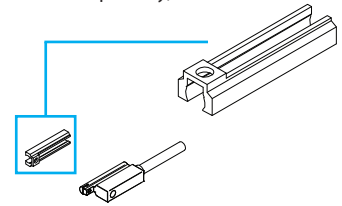


Sensor/Cylinder matching table

	DF-RW	DF-RW + DF-R002	DF-RW + DF-R003
Cylinder series	JX1	M	JLES (Ø16÷63)
	JX2	KE/KD/KL	JLEV (Ø16÷63)
	YMA20	RP/RO	
	YMP20	RM/RN	
	YMP30	RS/RQ	
	YMP50 (Ø16÷25)	OV	
	JLES (Ø12)	R	
	JLEV (Ø12)	W	
	YR3	JTES	
		JTEV	
		YMA11	
		YMP40	
		YMP50 (Ø32÷63)	

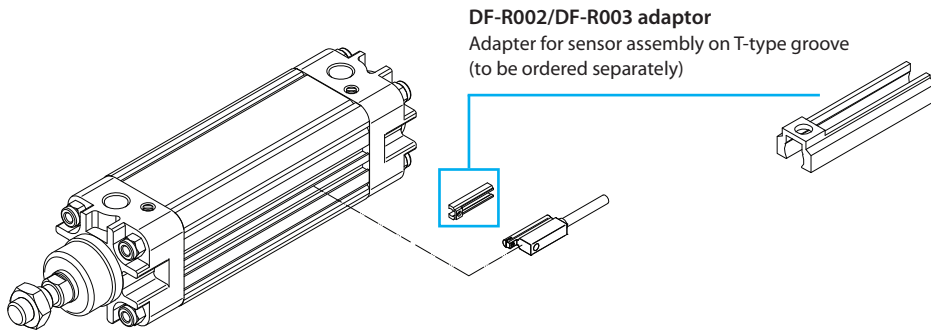
DF-R002/DF-R003 adaptor

Adapter for sensor assembly on T-type groove (to be ordered separately)

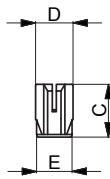
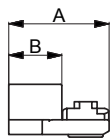
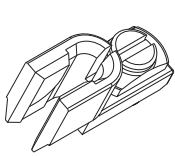


5

Assembly scheme with adaptor



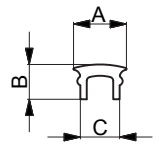
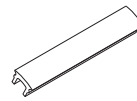
DF sensor cable clamping



Material: body: polycarbonate
screw: chrome-plated steel

A	B	C	D	E	Part no.
15	7,8	7,9	5,8	5,5	DF-001

DF sensor covering strip



Material: pvc

A	B	C	Part no.
7	4,6	5,2	DHF-002010